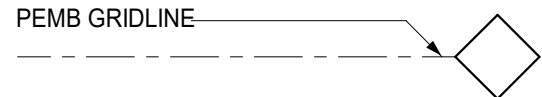




Copyright (c) 2025 Praxis3, LLC
All reports, plans, specifications, computer files, field data, notes and other documents
and instruments prepared by Praxis3 and retain all copyright law, statutory and other
inherent rights, including copyright. No part of this drawing may be reproduced in whole or in part without written permission of
Praxis3. It is to be returned upon request. Scales as stated are valid on the original
drawing.

Rev	Date	Comments
	05/22/26	PERMIT & BID

GRID LEGEND



PARTITION LEGEND

- SEE A500 FOR PARTITION TYPES.
- UNTAGGED STUD PARTITIONS ARE W038 (TYP). SEE FLOOR PLAN AND PLAN DETAILS FOR TAGS.
- DIMENSIONS ARE TO FACE OF STUD OR MASONRY UNO.
- GWB & STUD PARTITION

SOUND ATTENUATION KEYNOTES

- ALL STUD WALLS SURROUNDING AND WITHIN THE ROOM ARE TO RECEIVE SOUND ATTENUATION INSULATION THE FULL DEPTH AND HEIGHT OF THE STUD CAVITY. SEAL ALL WALL PENETRATIONS.

FINISH NOTES & LEGEND

HATCH PATTERNS FOR TILE REPRESENT INTENDED SIZE AND DIRECTIONAL LAYOUT. NOTIFY ARCHITECT IF DESIGNED LAYOUT IS NOT ACHIEVABLE.

ALL GROUT LINES ARE TO BE 1/8".

SEE X### FOR COMPLETE INTERIOR FINISH SCHEDULE.

ROOM NAME ROOM NAME & NUMBER

WF-1 BF-1 WALL/BASE FINISH

FL-# FLOOR FINISH

MT-# ACCENT FINISH INDICATOR

X/X### FLOOR FINISH TRANSITION

FINISH PATTERN DIRECTION

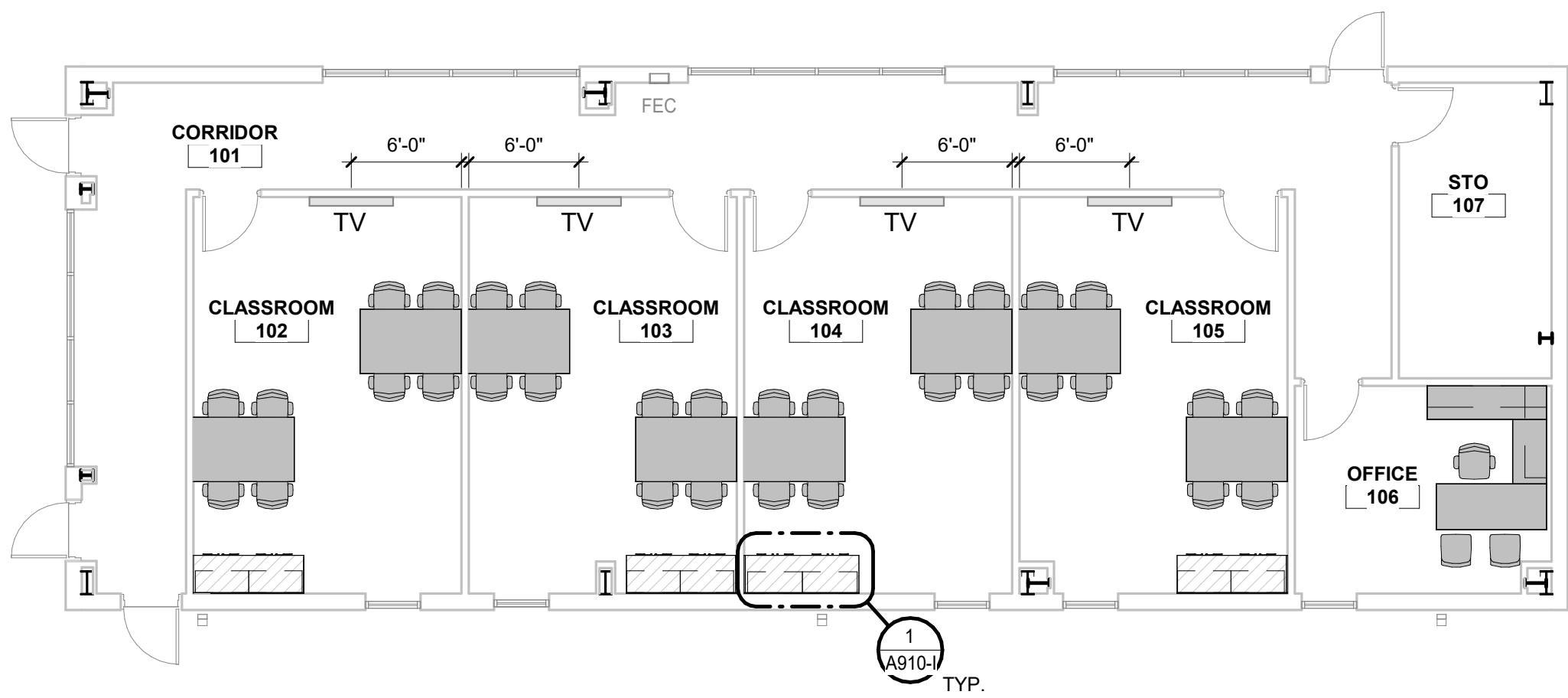
CG CORNER GUARDS

AREA NOT IN SCOPE

FFE & CASEWORK LEGEND

FURNITURE BY OWNER

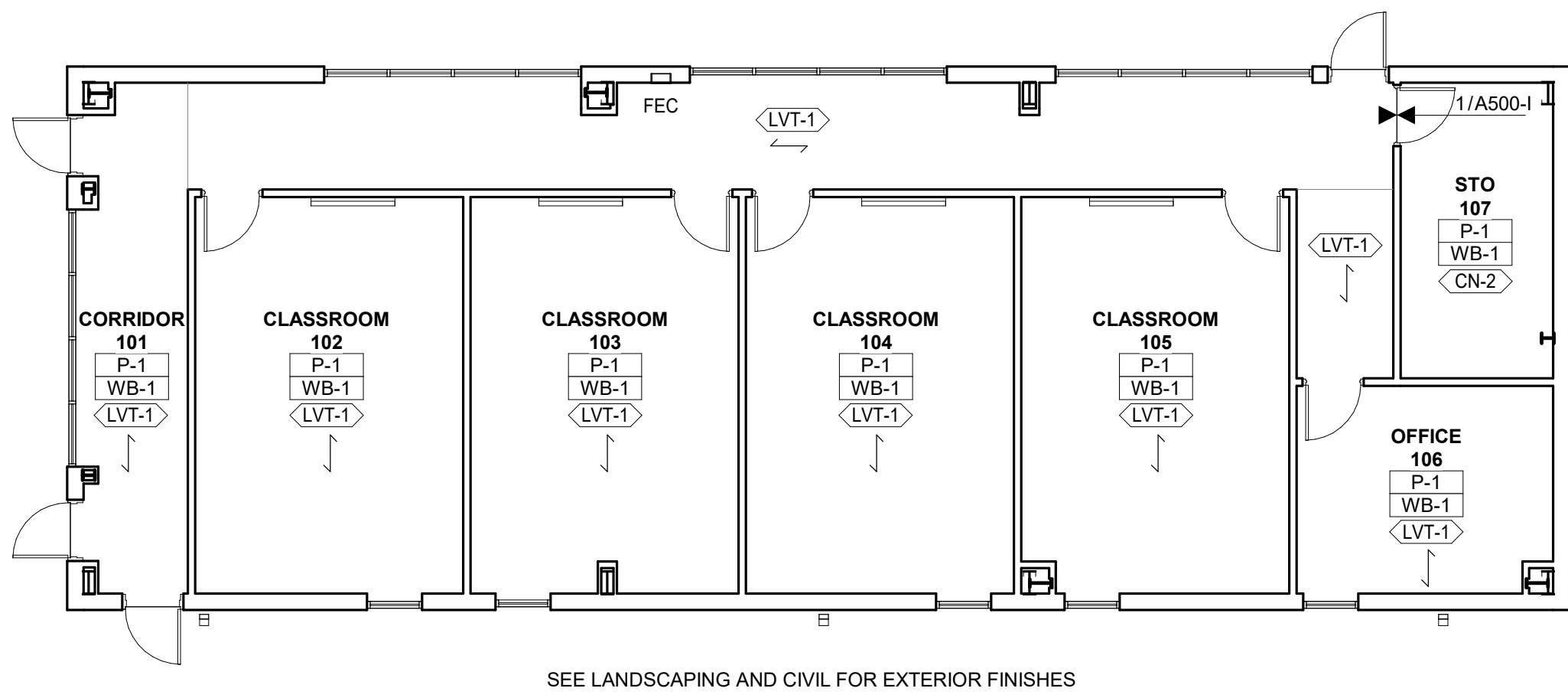
MILLWORK PROVIDED BY CONTRACTOR. SEE ELEVATIONS AND DETAILS



4 FFE PLAN

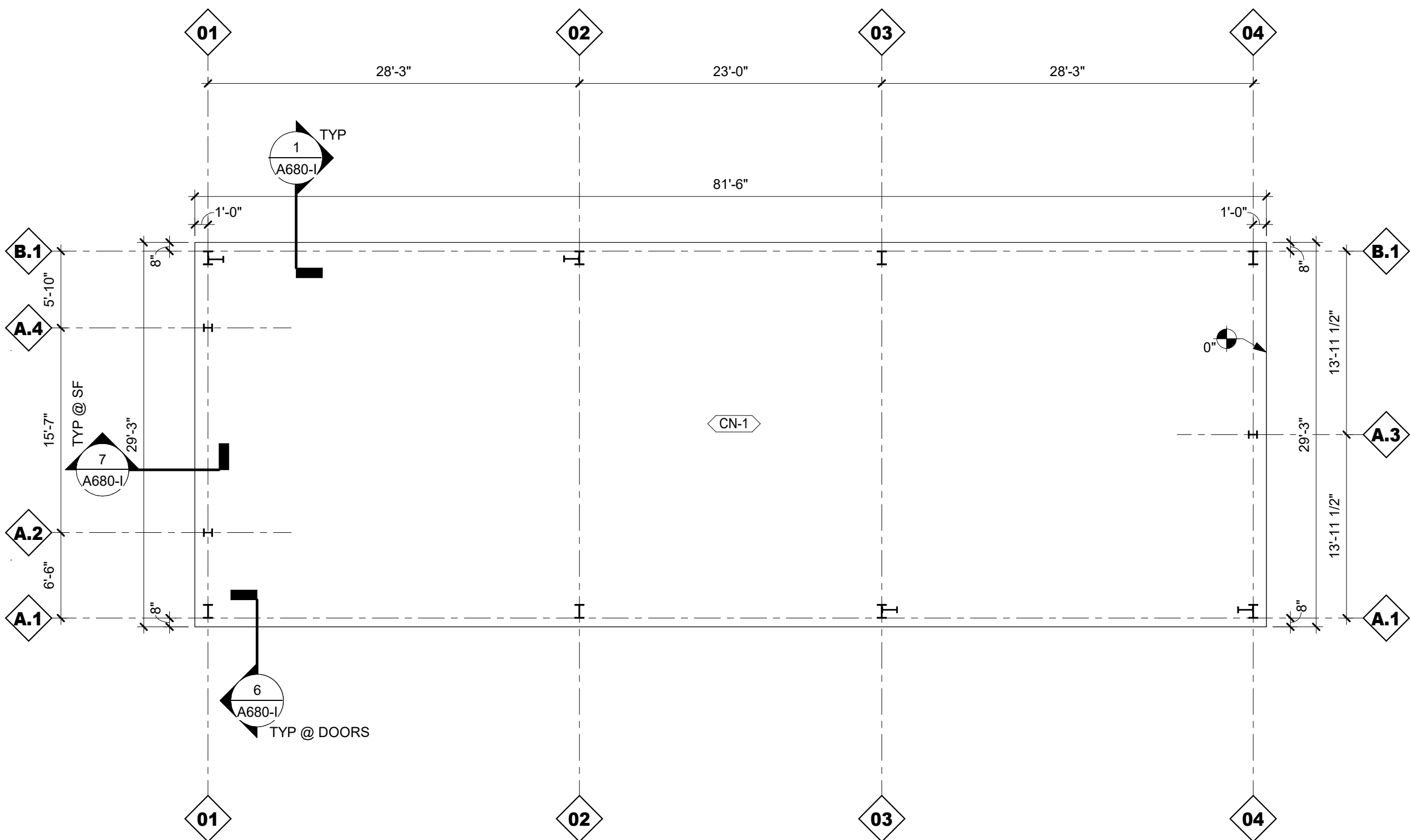
1/8" = 1'-0"

FURNITURE IN PLAN FOR SCHEMATIC REFERENCE ONLY. OWNER'S FURNITURE PACKAGE PROCURED SEPARATELY.



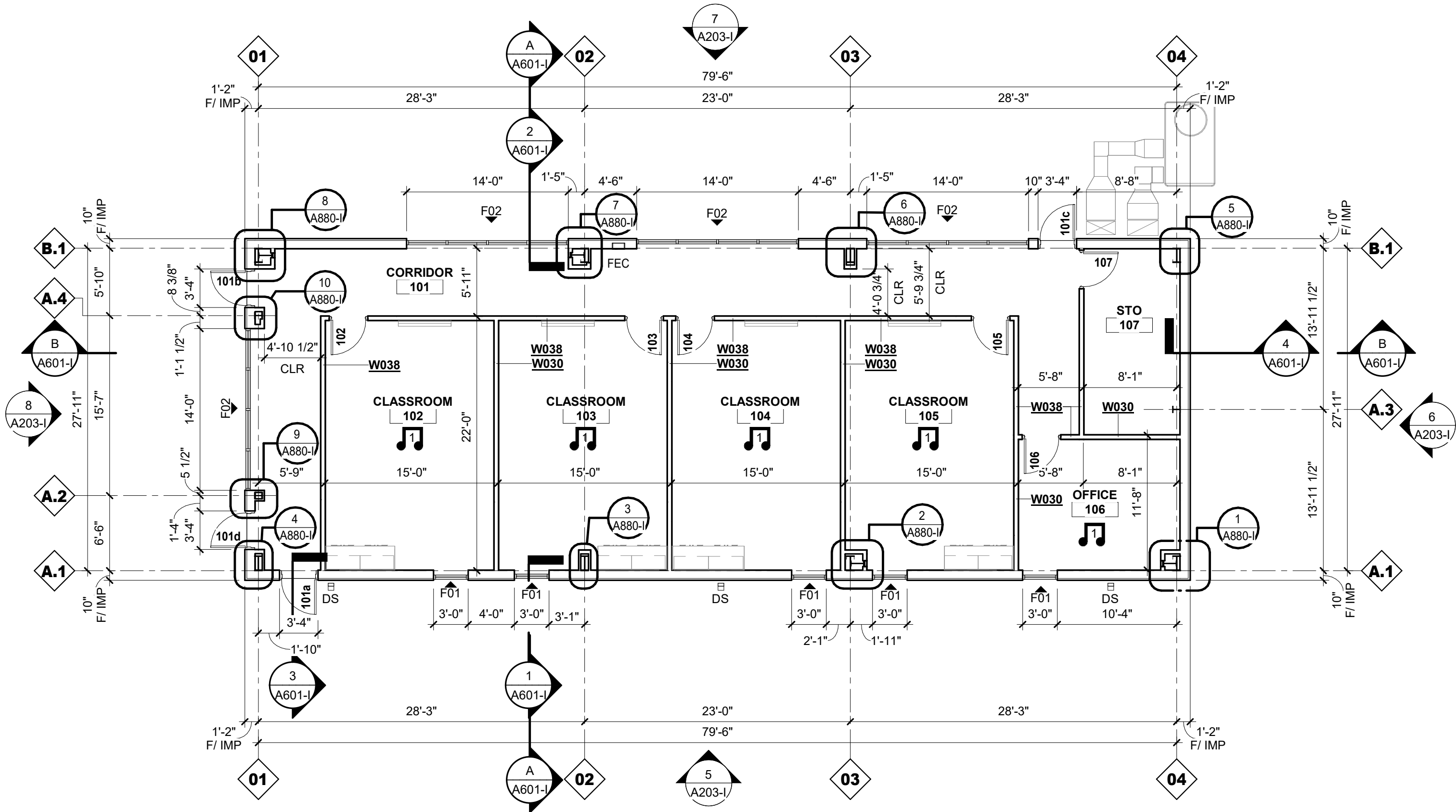
3 FINISH PLAN

1/8" = 1'-0"



2 SLAB PLAN

1/8" = 1'-0"



1 FLOOR PLAN

1/8" = 1'-0"

Client:

Fannin County

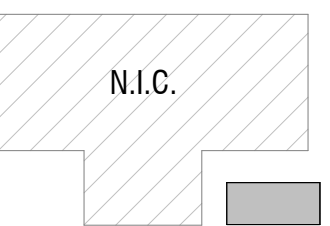
370 Tom Boyd Road
Blue Ridge, Georgia 30513

Project Number: 24184
Project Name:

Fannin County Rec.
Center - Phase I

580 Winding Drive
Blue Ridge, Georgia 30513

Key Plan:



Sheet Title:

Floor Plan

Sheet Number:

A201-I